



Environmental Sustainability Action Planning at Western Sydney University

Roger Attwater

Senior Manager, Environmental Sustainability

Office of Estate and Commercial

2019 Business Environment Expo

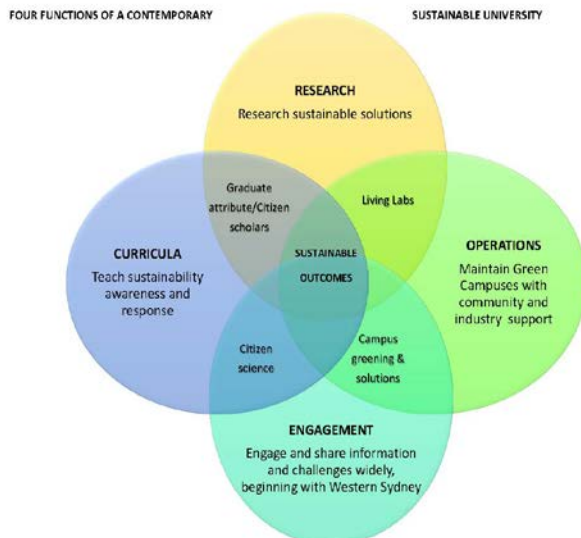
Environmental Sustainability Action Plan

Builds on Environmental Management System

- Compliance and due diligence
- Environmental risk mitigation
- Commitment to UN SDGs
- Engagement through Living Labs

Key themes:

- Resilience and climate change
- Sustainable energy
- Water cycle management
- Green star buildings and precincts
- Waste and circular economy
- Biodiversity Conservation
- Biosecurity
- Peri-urban agriculture
- Transportation and travel
- Procurement and supply chains
- Responsible offices and cafes



Resilience planning and climate change

Embed in strategy and planning

- Citizen scholars, Living labs

Integrative infrastructure strategies

- Sustainable strategy and asset planning

Adaptation for design and operations

- Design, demand and comfort
- Bushfire and storms

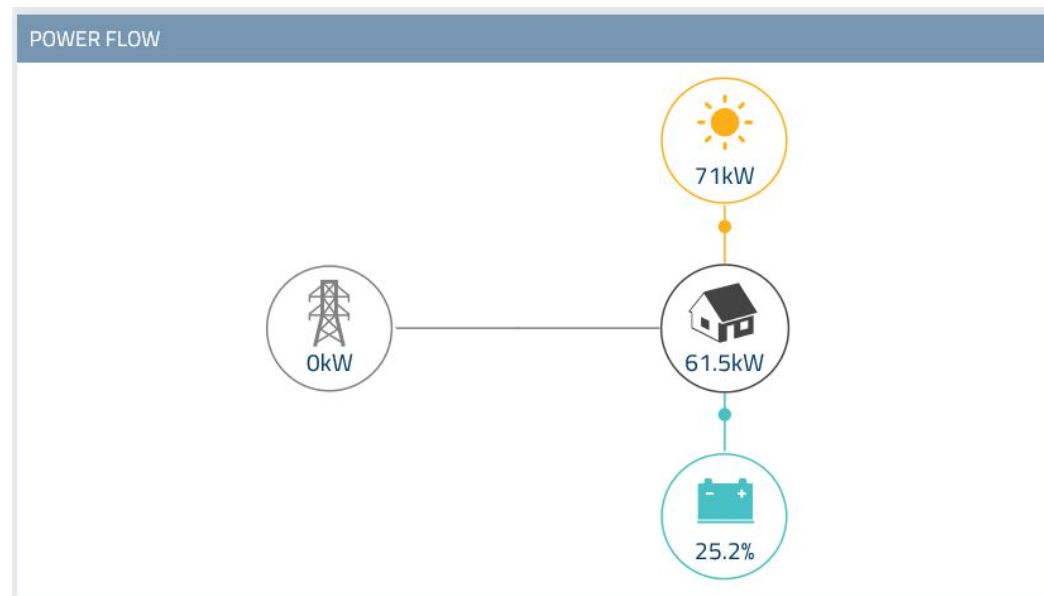
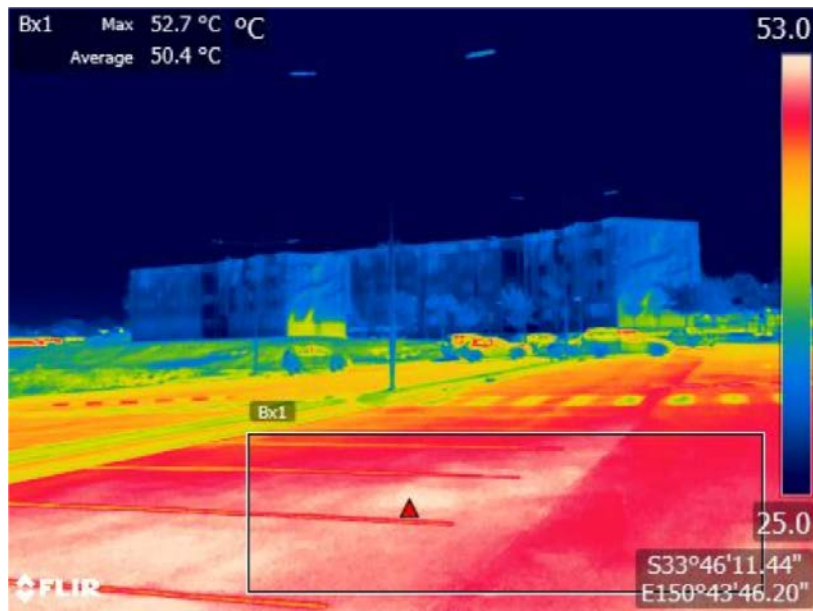
Sustainable energy

Strategy development

- Towards carbon neutrality
- Peak load reduction on campuses

Management initiatives

- Green Star building; BMS networks
- High efficiency solar hot water heating
- Modular PV: Rooftop / carpark / farm



Water cycle management

Non-potable resources

- Water recycling and stormwater
- Uses and risk management

Water sensitive urban design

- Building and precinct design
- Water use efficiency

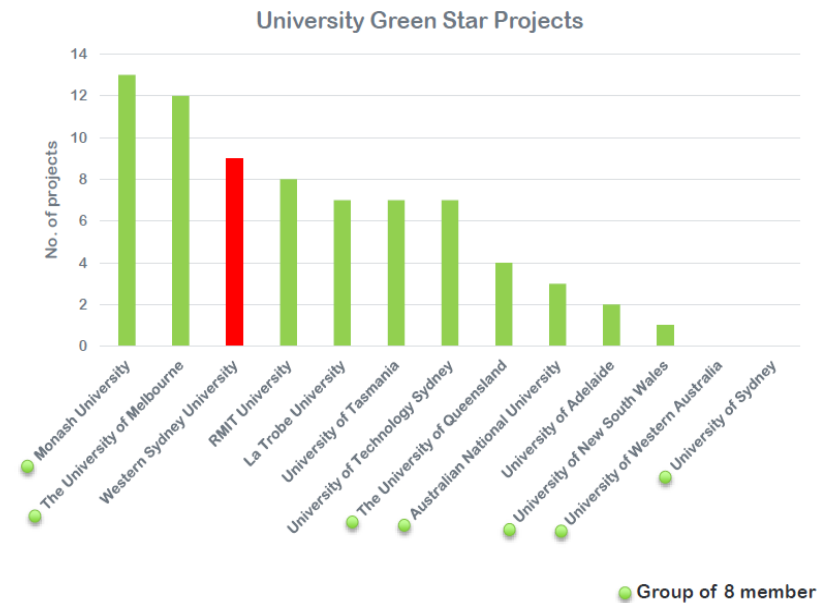
Green Star buildings and precincts

Green Star Buildings

- 8 Green Star accredited buildings
- 6 Star Education As Built - Science

Towards Green Star Communities

- Werrington and CBD campuses
- Established campuses, eg HWK



Waste and circular economy

Waste recycling and minimisation

- Approx. 90% diversion / recycling
- 50% reduction in total waste (09-18)

Waste Compaction and MRF separation

- Contamination, illegal dumping, skips
- Sector waste recycling strategies

Green and food waste initiatives

Impact of 'return and earn' ?

Biodiversity conservation

Cumberland Plain and riparian vegetation

- Hawkesbury, Parramatta, Kingswood, Milperra, Campbelltown
- Bush regeneration; Bushfire mitigation
- Biodiversity Stewardship Site

Natural and cultural assets

- Teaching and research, eg EucFACE
- Cultural heritage – Vineyard Creek

